

# State of Wyoming Corner Record



RECP #: 784806

(In compliance with the *CORNER PERPETUATION AND FILING ACT*, Wyoming Statutes, 1997 Section 33-29-140 et. seq., and the Rules and Regulations of the Board of Professional Engineers and Professional Land Surveyors)

RECORDED 8/5/2020 AT 12:27 PM BK# 2687 PG# 587  
Debra K. Lee, CLERK OF LARAMIE COUNTY, WY PAGE 1 OF 1

Reverse side of this form may be used if more space is needed.

Record of original survey and citation of source of historical information (if corner is lost or obliterated). Description of corner monumentation evidence found and/or monument and accessories established to perpetuate the location of this corner. Sketch of relative location of monument, accessories, and reference points with course and distance to adjacent corner(s) (if determined in this survey). Method and rationale for reestablishment of lost or obliterated corner.

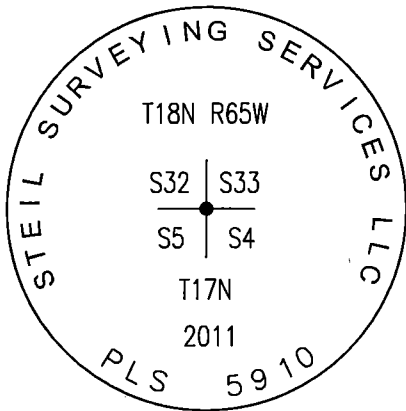
## Northeast Corner, Section 5, T17N, R65W

### GLO Record

SET A SANDSTONE 30x16x3 FOR COR. TO SECS 4, 5, 32, & 33

### Monument Description

FOUND: 3-1/4" ALUMINUM CAP, IN MOUND OF STONES, MARKED AS SHOWN



### LATITUDE & LONGITUDE

NAD 83 (2011)  
BASED UPON OPUS SOLUTION

Latitude: N41°28'40.85535"  
Longitude: W104°40'20.47487"

Date of Field Work: April 2020

Topographic Land Surveyors Office Reference No.: 132410

### Cross Index Plat

1	2	3	4	5	6	7	8	9	10	11	12	13	14	15	16	17	18	19	20	21	22	23	24	25		
A																									A	
B																									B	
C		6		5		4		3		2		1													C	
D																										D
E																										E
F																										F
G		7		8		9		10		11		12														G
H																										H
J																										J
K																										K
L		18		17		16		15		14		13														L
M																										M
N																										N
O																										O
P		19		20		21		22		23		24														P
Q																										Q
R																										R
S																										S
T		30		29		28		27		26		25														T
U																										U
V																										V
W																										W
X		31		32		33		34		35		36														X
Y																										Y
Z																										Z
	1	2	3	4	5	6	7	8	9	10	11	12	13	14	15	16	17	18	19	20	21	22	23	24	25	

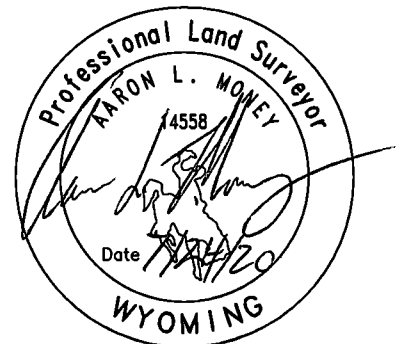
Firm/Agency, Address



**Topographic Land Surveyors**  
340 W B St., Suite 204  
Casper, WY 82601  
(307) 439-4567

This corner record was prepared by me or under my direction and supervision.

SEAL & SIGNATURE



Date Prepared: 7/16/2020

Corner Name: NE Section(s): 5 T. 17 N, R. 65 W, 6th P.M. Laramie County, Wyoming Cross-Index No.: A-9